

Classroom usage during QEEE live class Guide



Contents

PREFACE	4
Audience	5
List of Abbreviations	6
1. How to start your audio –video?	7
2. How to configure multiple displays?.....	8
3. How to see Presenter video in full screen?	8
4. Appendix	9

PREFACE

This document gives the classroom usage during QEEE live class session in the QEEE program of MHRD.

This Chapter says about how to start your audio and video interaction, once you are logged into the QEEE session.

Tell us how to extend the multiple displays connected to the

Computer.

Tells us how to view the presenter's video in full

Screen during a live session.

Audience

This document is intended for the system administrator at the local college end. By reading this document, the system administrator would be able to start up the audio-video set up as well as interaction.

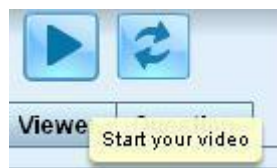
List of Abbreviations

S.No	Abbreviation	Meaning
1	QEEE	Quality Enhancement in Engineering Education

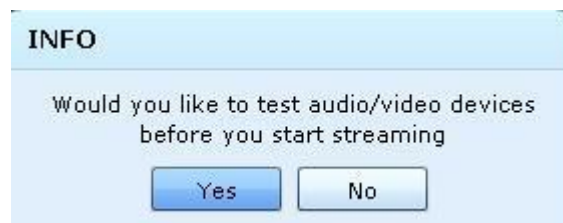
1. How to start your audio –video?

Once you have logged in for the QEEE session, start publishing your audio-video in A-VIEW by following the below steps,

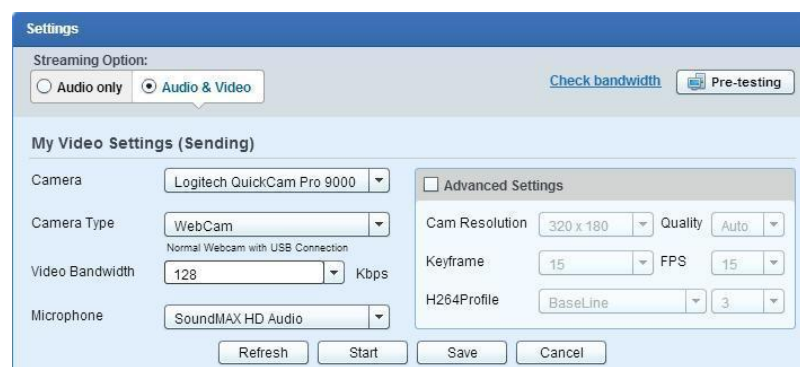
1. Click Play button shown below



2. A dialog box appears, it is recommended to select Yes for pre-testing your speaker, microphone (or headphone) and camera. If you click on No, you can start your audio/video without checking the devices.

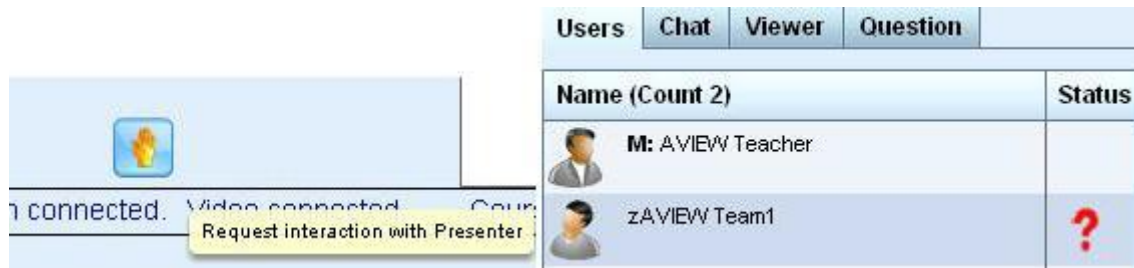


3. In Settings window, select the connected video and audio devices, appropriate video quality and click *Start*. Now your local video gets displayed at the top right corner.






4. You may click *Handraise* button shown below if you want to inform the Presenter that you would like to interact with him/her. When you click on it, Presenter can see a Question Mark symbol on your name in the user-

list.



The screenshot shows a portion of the A-VIEW classroom interface. On the left, there is a status bar with a yellow tooltip that says "Request interaction with Presenter". On the right, there is a "Users" panel with tabs for "Chat", "Viewer", and "Question". Below the tabs is a table with the following data:

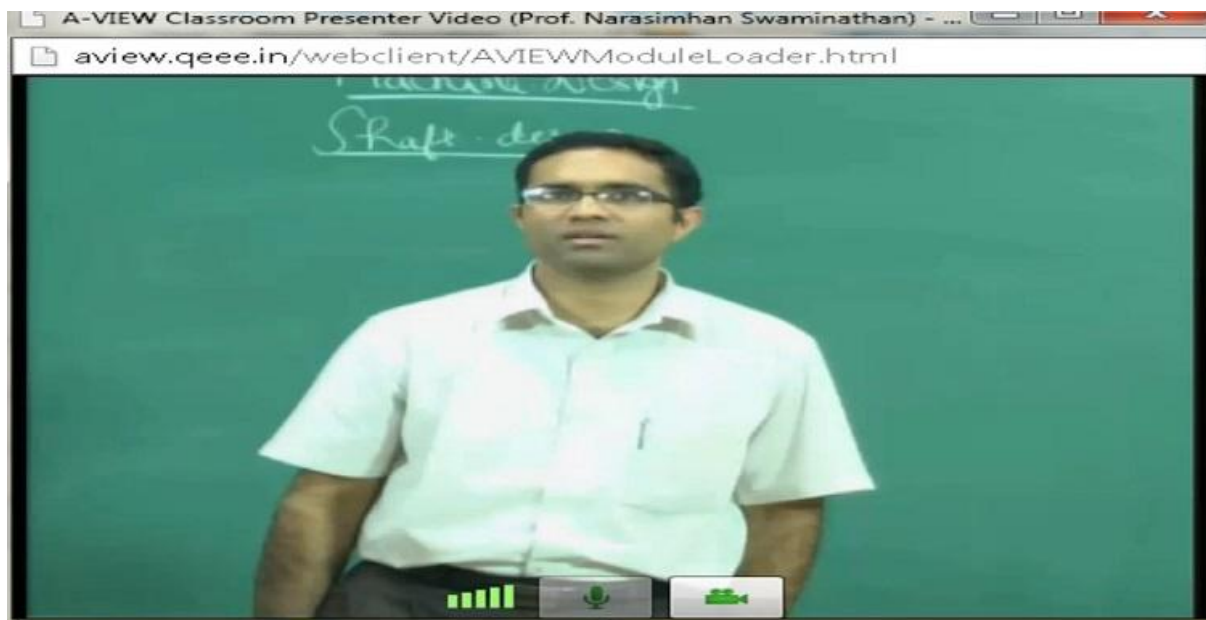
Name (Count 2)		Status
	M: AVIEW Teacher	
	zAVIEW Team1	

2. How to configure multiple displays?

If you have multiple displays connected to your computer, you have to extend the display (you should not use clone/duplicate options). We would recommend you to configure your displays in such a way that you can see Presenter's video in one display and the remaining on the other display.

3. How to see Presenter video in full screen?

1. Double click on the presenter's video and drag the new window to the second display.



- Now the main A-VIEW screen will remain in the first display.

The screenshot displays the A-VIEW software interface. At the top, it shows the 'A-VIEW' logo, 'AMRITA UNIVERSITY', 'MHRD Funded by NME-ICT', and 'QEEE'. The interface includes a 'Users' panel on the left with columns for 'Name (Count 22)', 'IC', and 'Status'. The main area shows a document titled 'Bevel_and_others.pdf' with the text 'nomenclature of Bevel Gears' and a technical diagram of a bevel gear. The diagram is labeled with various parts: 'Face', 'Pitch angle', 'Pitch angle', 'Uniform clearance', 'Pitch diameter D_1 ', 'Back cone', and 'Back cone radius r_a '. Below the diagram is the caption 'Figure 1: Bevel gear nomenclature'. The bottom status bar indicates 'Collaboration connected. Video connected. Course : QEEE-II Lecture : Journal bearings Part 2' and 'A-VIEW (Amrita Virtual Interactive E-Learning World) Version 3.7.11933- © 2007-2014'.

In case, if the text in document is not properly readable, you may view the document screen in full screen by clicking on the full screen button shown in the below image. But in this case, if Presenter uses whiteboard, it will be hidden under the document full screen, so you have to close the document full screen after the need.



4. Appendix

None.